













A

Q



mm

5

0















4

90





LO

O

4

BY

e

!

rn





mm **U**

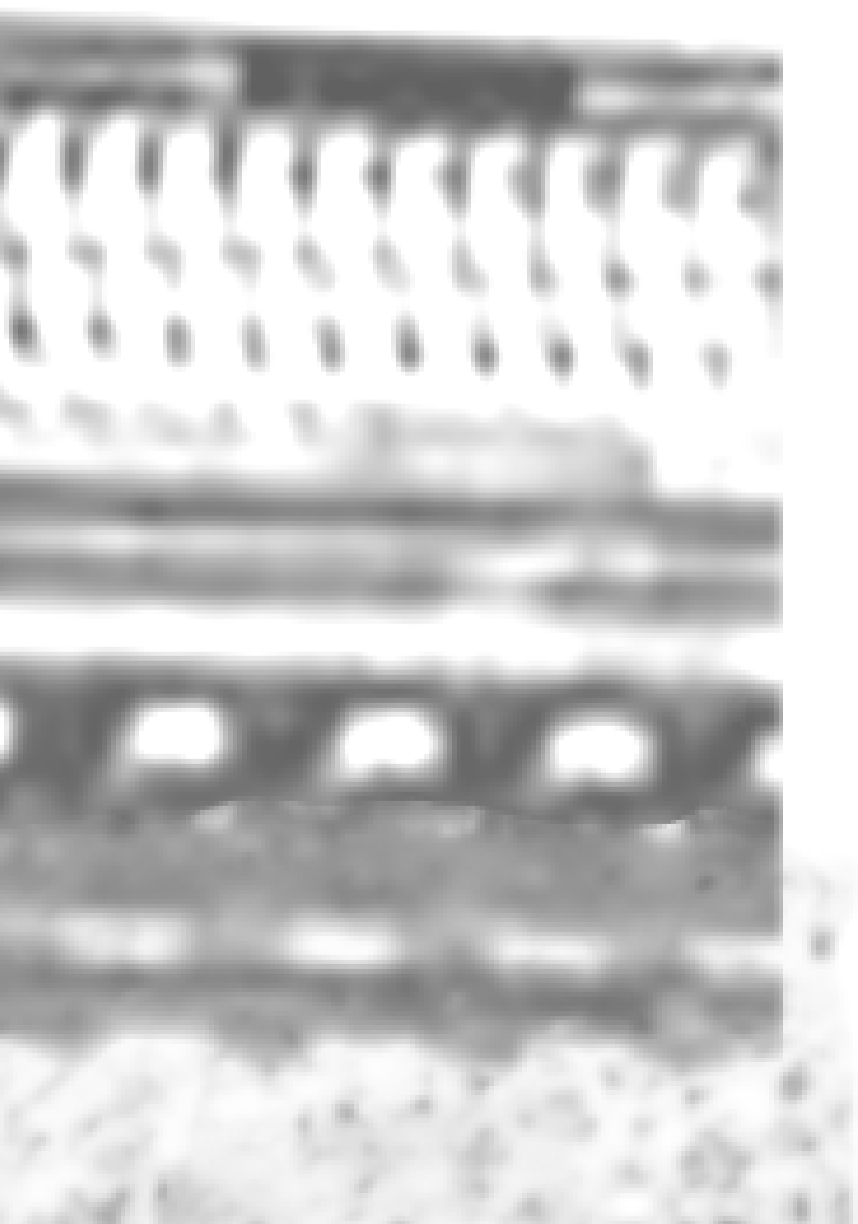


MUNO



HT





ER

OB

nts

rs

Chin

Wei

LOS

BO

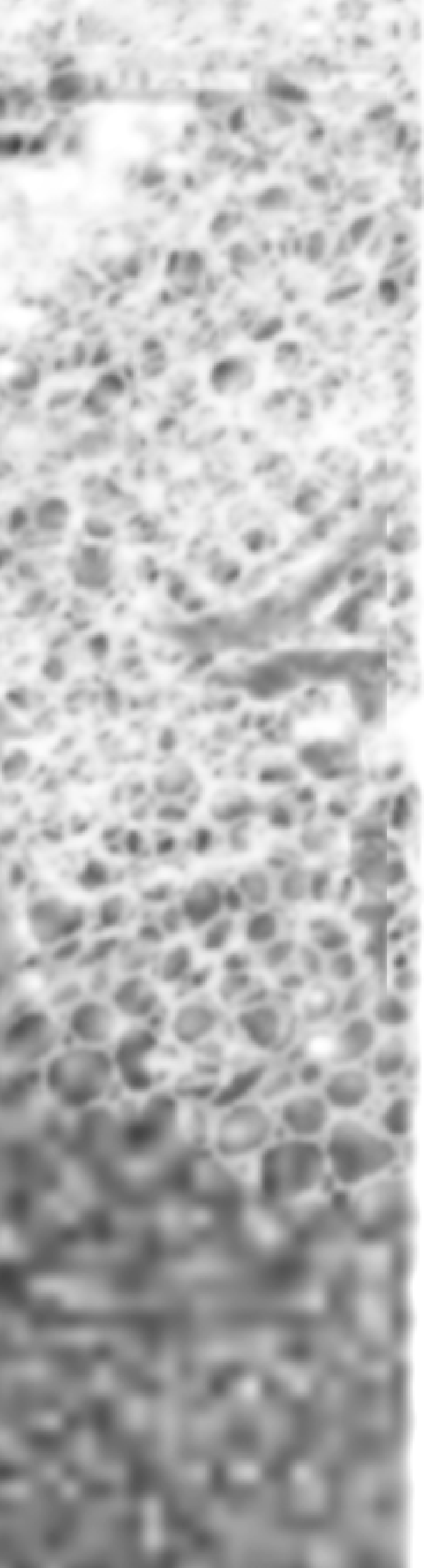
SEN

T

ag

age

er





100





NO

















WNI



RS

A black and white photograph of a stone archway. The arch is made of rough-hewn stone blocks. In the distance, a person is standing in the center of the archway, looking towards the camera. The background is a textured, slightly out-of-focus stone wall.

Info

er

er

Ne





in

K S W

note

n. i. n.



rod y

mmeeo



di a

M. O. B.

GURNEY

CO.

orig

**ING
LE**

